



Specialised Social Services: need, policy, case studies

Terry Dignan
Serious Fun, USA



EURORDIS Membership Meeting 2013

1st June, Dubrovnik

“I wish I could recall with clarity the impulse that compelled me to help bring this camp into being. I’d be pleased if I could announce a motive of lofty purpose. I’ve been accused of compassion, of altruism, of devotion to Christian, Hebrew, and Muslim ethic, but however desperate I am to claim ownership of a high ideal, I cannot. I wanted, I think, to acknowledge Luck; the chance of it, the benevolence of it in my life, and the brutality of it in the lives of others, made especially savage for children because they may not be allowed the good fortune of a lifetime to correct it.”



-Paul Newman-

GENERAL INFORMATION ON THE SERVICE

Name of Service: Serious Fun

Country: USA / Europe / Africa / Asia / S. America

Type of Service: Childcare, Therapeutic Recreation

Type of institution: Non-profit, nongovernmental

Origins of funding: Private funds-caring donors

Cost for beneficiaries: None

Dates/Times of the Year: All year round

Target Population: Children with serious illness and their families

Age-Groups: Children, young adults and adults

Countries of Origin: 50 countries in: Europe, Middle East, North America, Africa, Asia

Webpage: <http://www.seriousfunnetwork.org>



MAIN FIGURES

(Based on 2011 figures)

Total Budget/Year:
\$21,379,918

107,219
volunteers cared for campers
and families since 1988

Total Nr. of Beneficiaries/Year:
51,514

Total Nr. of Permanent Staff:
1,289

Total Nr. of Intermittent Staff:
18,136

Nr. of Volunteers/year:
18,487



BRIEF HISTORY

Date of Start:
1988

Created by:
Paul Newman

Short History:
More than 2 decades ago, Paul Newman had a vision: “imagine if children with serious illnesses had the chance to simply be children. To just have fun.” So he founded a camp where kids could, in his words, “raise a little hell.”

Were patients involved in the creation process?
No



To have some kid who has been in the hospital six months out of the year come up to you and say, 'To come to camp, to come back here, this is what I live for,' is pretty potent stuff.

- Paul Newman

GOVERNANCE AND MANAGEMENT

Currently managed by:
John C. Read (President & CEO) and
Richard D. Segal (Chairman of the
Board)

Funded by:
Private funds from caring donors

Governance structure:
25 board Directors

Are patients/patient representatives
involved in the governance process?
No



QUALITY ASSESSEMENT

Are patients evaluating the service after attending?

Yes using a specific evaluation form

Is the service accredited by any authority performing quality control?

New member camps must be in substantial compliance with the Criteria prior to opening. Each camp performs an annual self-assessment. A team from the Association will make a verification visit to member camps once every three years. A written report of the verification visit will be made first to the Board of Directors of the Camp and then to the Board of Directors of the Association.

Is the service connected to a Centre of Expertise/Hospital?

Yes, each camp is connected to a hospital and the Yale Child Study Center collates data for research purposes.



Organisation and Administration

INTERNATIONAL ENVIROMENT



- **Strategic plan:** The goals and milestones are developed in an independent and sustainable programme and within a 3-5 year time frame
- **Internal regulation:** All the Organizations are obliged to follow specific Medical and Programme Criteria and Standards
- **Organization of documentation:** All the documentation is categorized and easily accessible

What started with one camp in the United States in 1988, quickly sparked inspiration around the world, including Europe, where today 5 camps operate year-round as a vital part of the Network. The camp idea first reached Europe when Barretstown was founded in Ireland in 1994. Through the work of dedicated staff and volunteers, these camps deliver SeriousFun to thousands of children every year from countries throughout Europe and beyond.

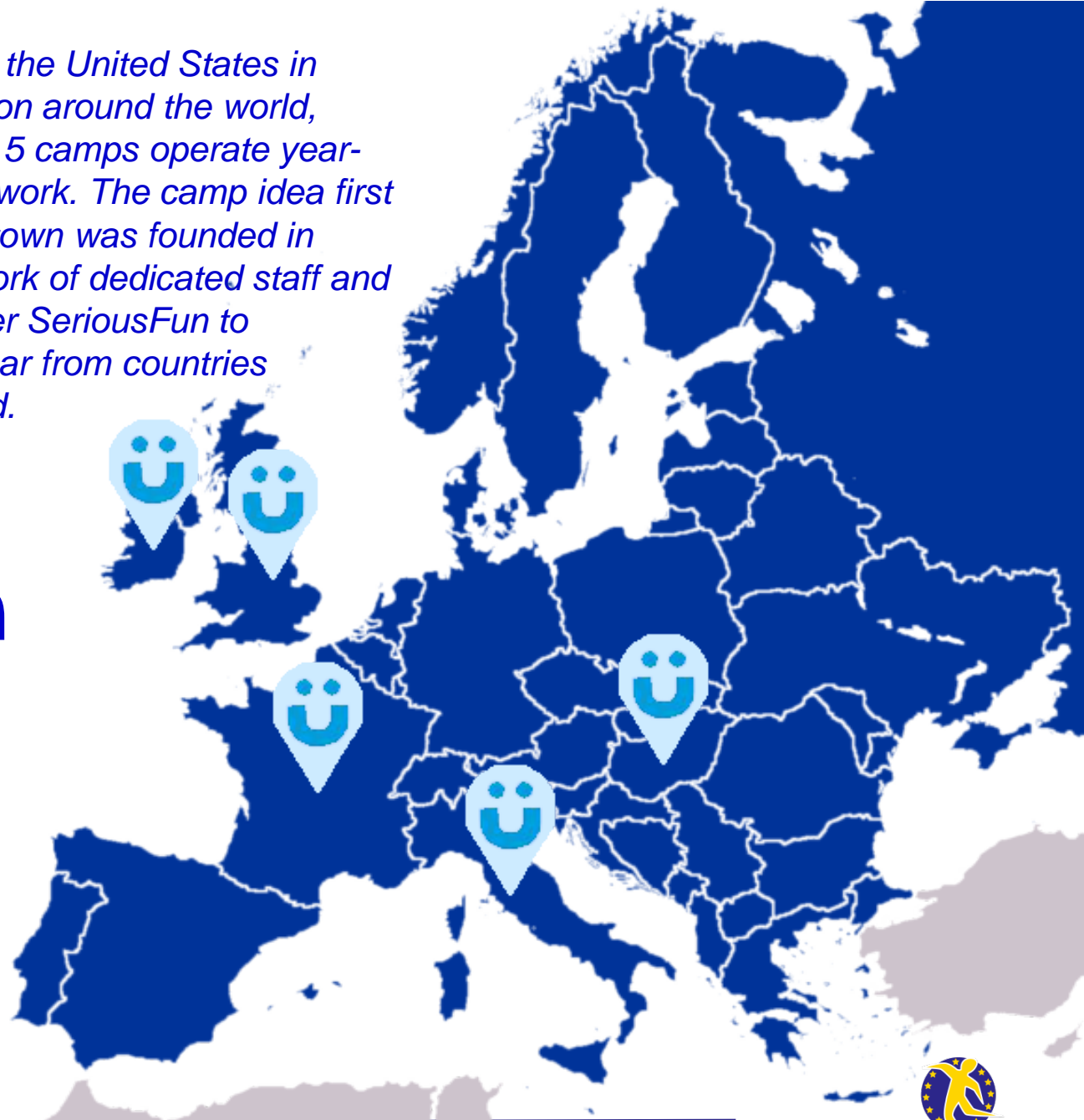
European Serious Fun Camps

**Children and families served
in 2012**

9,286

Volunteers serving in 2012

4,010



IRELAND



Location: County Kildare, Ireland **Year Opened:** 1994

Housed in a fairytale castle in the beautiful foothills of Ireland's Wicklow Mountains, Barretstown has welcomed children from Ireland and many other European countries. The camp buildings have all of the modern amenities and are fully accessible, while retaining a medieval theme with rough stone walls and high ceilings. The Children's Village, a collection of cottages, overlooks a secret garden complete with decorated and accessible fairy houses. It's the perfect setting for a magical camp experience. Barretstown also offers a full range of adventure activities and opportunities for campers and families, including programs in photography, pottery, boating and adventure courses.

People Served: 3,083
Volunteers: 1,230

France

FRANCE



Location: France **Year Opened:** 1997

L'ENVOL, French for “take off,” has served more than 7,000 children from throughout the region since it was first opened in 1997. The camp gained national recognition in 2001 when Paul Newman toured the camp with the former President of France, Jacques Chirac. The programs at L'ENVOL are designed and delivered with specially trained camp staff, who provide 24-hour care and support to each child. All the activities at L'ENVOL embrace the camp motto, “I am capable, I can do it, and I can overcome my fears!”

People Served: -
Volunteers: -

United Kingdom

UNITED KINGDOM

OVER THE WALL



Locations: Bryanston School, North Dorset; Tulliallan Castle, Scotland; Whitemoor Lakes, Staffordshire, Midlands; Dukeshouse Wood Activity Centre, Northumberland **Year Opened:** 2004

Over The Wall programs are held at several locations throughout the UK. All camp locations are set on large, countryside properties with well-equipped accommodation, facilities for indoor and outdoor activities, and stunning views. Together, these carefully designed programmes create opportunities for more than 400 children annually. Whether swimming, catching their first fish, dancing in the sunshine or performing centre stage, every moment is one to remember.

People Served: 415
Volunteers: 506

Hungary

HUNGARY



Location: Hatvan, Hungary **Year Opened:** 2007

The only program of its kind in Hungary, people say that Bátor Tábor is a hidden world because it is surrounded by meadows and forests on all sides. Located in Hatvan, near Budapest, the facility is a former pioneer camp that was renovated with close attention to accessibility and meeting the medical and psychological needs of campers. A high-ropes course, rowing lake, archery field, synthetic turf field and indoor sports hall bring a unique and meaningful opportunity to 1,700 children and families in Central Europe each year.

People Served: 2,246
Volunteers: 1,425

ITALY



Location: Limestre, Italy **Year Opened:** 2007

Located in the midst of a World Wildlife Foundation Reserve in the heart of Tuscany, Dynamo Camp is the first camp in Italy for children with serious illnesses. The beautiful, modern facility uses green energy and boasts innovative architecture, including buildings with glass walls, an eco cafeteria, theatre, gym, pool, museum and medical center. Bio-architecture and lots of natural wood have created an elegant, colorful environment. Climbing, horse riding, music (including a camp radio station), cooking, photography, creative writing, archery, a workshop and nature games allow the 885 children and families served each year to establish new friendships in an atmosphere of enjoyment and emotional support.

People Served: 3,542

Volunteers: 849

The 10 Guiding Principles for Specialised Social Services

Rights and Personal Identity

MISSION: To create opportunities for children and their families to reach beyond serious illness and discover joy, confidence and a new world of possibilities, always free of charge

SeriousFun Children's Network spans the globe with a thriving community of 30 camps and programmes that have served children from over 50 countries and throughout five continents. Designed around the principle of Therapeutic Recreation (intentional programming), creative staff members and volunteers ensure that every child experiences success and gains the confidence to try new and exciting things in a safe and supportive environment. Our camps feature a diverse range of adaptive programmes, such as high and low ropes courses, and therapeutic riding, as well as the traditional camp activities like swimming, boating, arts and crafts and campfires. We also bring camp to life in resource-limited locations around the world, including Africa, Southeast Asia, South America and the Caribbean through our Global Partnership Program.

Person/Family Centeredness

Different programs for different needs:

- Children/ Young Adults camps
- Family camps
- Sibling camps
- Ex campers programmes (leadership training)



All programmes are provided completely free of charge by each organisation

Holistic, Comprehensive, Integrated Approach

Therapeutic Recreation:

Challenge the children, allowing them to decide how they want to be involved, ensuring **success** in what they would have seen as “impossible” and at the end to **reflect** on what they did and **discover** new skills that can be utilized in a sometimes uncertain future

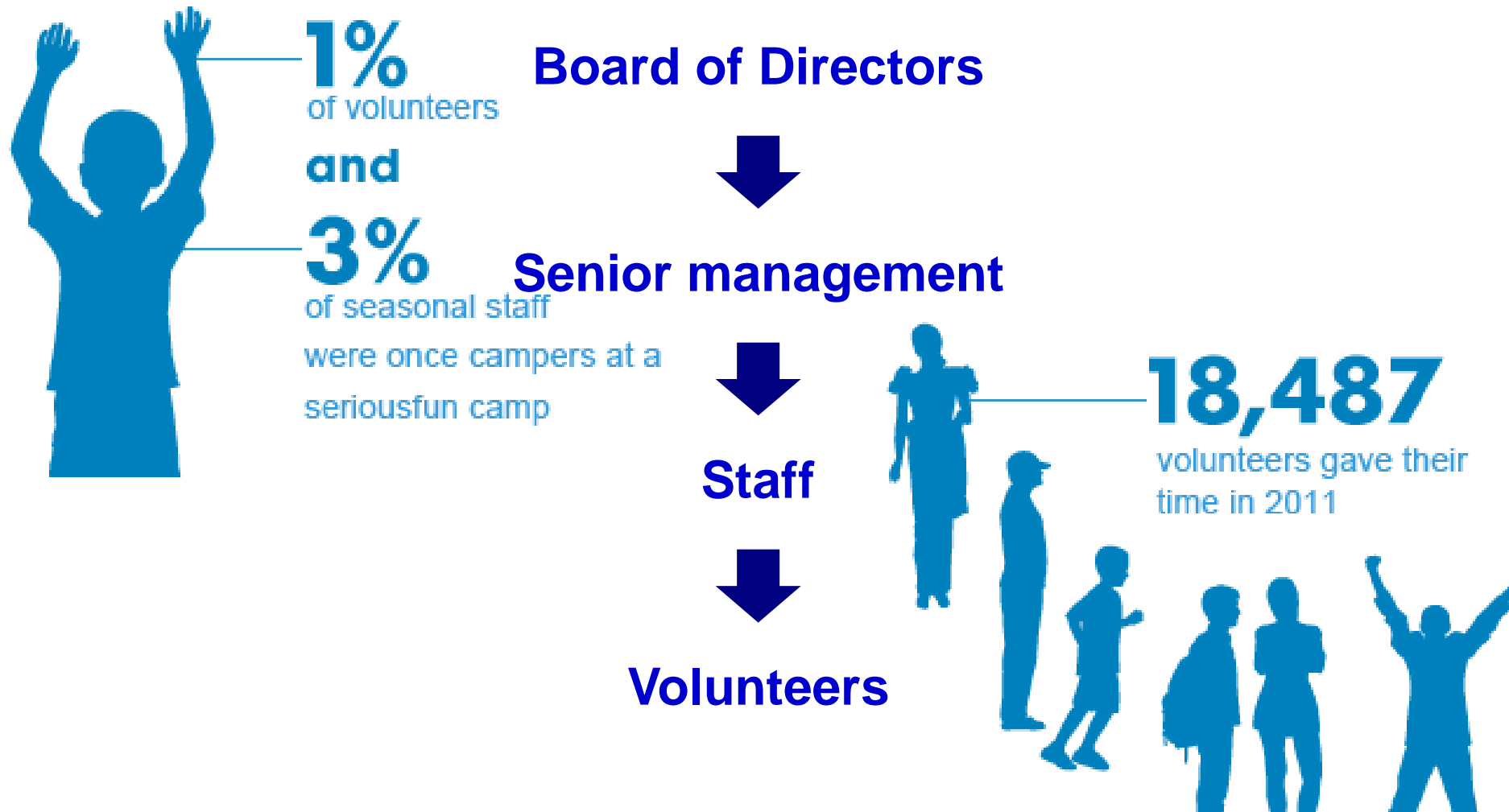


MULTIDISCIPLINARY TEAM:

- Staff
- Medical
- Volunteers
- Advisory

From different fields
(Psychology, Art, Sports, etc.).
Each receives full training

Governance Structure



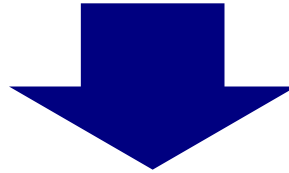
Evaluation and Continuous Improvement of Quality



Connection to Centres of Expertise/Medical Institutions

Changes In Children Noticed By Their Families Following Camp

- 83% of parents reported noticing an increase in their child's confidence;
- 80% reported an increase in self-esteem;
- 76% reported an increase in maturity;
- 74% reported an increase in independence;
- 72% reported an increased interest in social activities.



Yale Child Study Center

+

each camp is connected to a local Medical Institution

The mission of the Study Centre is to understand child development, social, behavioural, and emotional adjustment, and psychiatric disorders and to help children and families in need of support

Admission Procedures and Individual Assessment

Selection Criteria for Children with serious illness:

- Age: 7-17 years
- Within 5 years since end of treatment or BMT
- Requires medical supervision while at camp
- Reasonably good general condition
- Children on chemotherapy
- Children on palliative therapy

32,223

children served in 2011
including 11,162 campers
2,813 through Global Partnership Programs
18,248 through Outreach Programs



Training of Staff and Volunteers

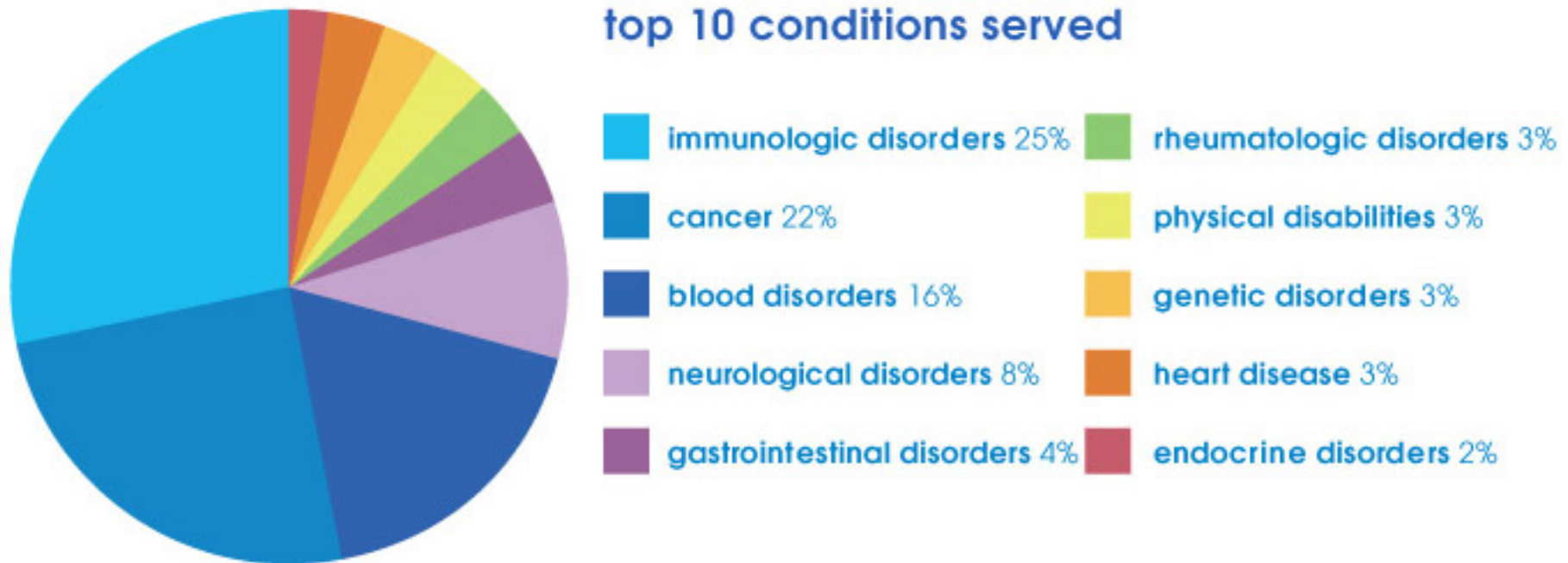
PRE-CAMP ORIENTATION & TRAINING GOALS

- Philosophy, Vision and Mission
- Team-building
- Medical orientation
- Behaviour Management
- Working with children
- The value of volunteers
- Camp Policies and protocols
- Staff and volunteer manuals
- Ongoing training modules
- And more



Rare Diseases and Health Care Needs

top 10 conditions served



MEDICAL PROFESSIONALS:

At Serious Fun Camps, the number one concern is the safety of the children (and staff), from patching up a scraped knee to making sure campers receive medications on time and that staff are fully supported. In addition to the full-time Medical and Nursing Directors, camps are also attended by other medical professionals such as doctors, nurses, pharmacists and psychologists to support the program.

Thank You Questions?

Terry Dignan

terencedignan@gmail.com

serioösfunSM
founded by paul newman